

# SLOTTED-Z INSTALLATION GUIDE

Instructions provided are for information purposes only. CLADIATOR assumes no responsibility or liability for any errors or omissions. Information presented does not supersede project design requirements. Always verify that the size, spacing, and orientation of the sub framing (z-girts) and fasteners align with the engineering specifications of the project.

## ATTACHMENT TO SUBSTRATE:

- Fasten through centerline on back flange of Slotted-Z into stud wall using approved minimum #14 hex washer head self-drilling screw with 16-inch O.C. spacing, drilling into the stud(s) when applicable. When fastening into CMU or concrete substrate, use threaded concrete fasteners approved for the project specific design load. Do not use impact fasteners or impact power tools when installing Slotted-Z. Shims may be used to level as necessary up to ¼-inch depth which should be installed facing downwards to decrease water build up. Spacing of fasteners not to exceed 16-inch O.C. unless otherwise noted by engineer.

## SECUREMENT OF INSULATION:

- Secure semi-rigid (mineral wool) or rigid insulation using ROCKETStick by inserting into pre-fabricated slots. Recommended spacing is (4) ROCKETSticks per 10-feet of Slotted-Z (approximately every 2.5-feet).

## CUTTING TO LENGTH:

- When cutting the Slotted-Z with a miter or circular saw, it is recommended to use a gritted or diamond blade with a grit size from 30 to 60. If using a band saw or jig saw, recommendations include gritted, diamond, or basic metal blades with 24–32 teeth per inch.

## CLADDING FASTENING:

- Attach cladding by fastening into front flange of Slotted-Z using the centerline as a guide. Use approved #14 Hex Washer Head Self-Drilling Screw or approved fastening component to meet project specific load requirements.

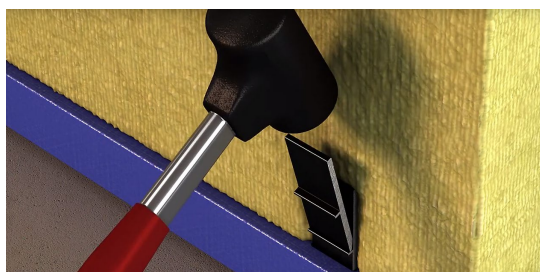
## BEST PRACTICES:

- Substrate Type / Fastening / Spacing:** When installing into a steel stud framed structure, the minimum penetration into the stud should be three full threads. For concrete, CMU, and wood substrates, embedment depths vary and it is recommended to utilize threaded HWH structural fasteners designed for the substrate. Pre-drilling of Slotted-Z may be necessary for concrete, CMU, and wood substrate applications. Verify substrate is free of debris, defects and is of suitable planarity to support the sub framing and facade.
  - The minimum spacing between fasteners is 5/8-inch while also maintaining 5/8-inch from all edges of the z-girt. Maximum Spacing is 16" OC unless otherwise noted by the EOR.
- Anchoring / Fastening:** Ensure not to strip or excessively tighten the fasteners and adhere to all fastener specifications including minimum edge distances and drill speeds as provided by the fastener manufacturer.
- Butting:** Leave a 3/16-inch minimum gap between installed Slotted-Z girts to allow for thermal movement. Do not butt up directly against each other.
- Openings and Corners:** Install the Slotted-Z at all corners and jams to provide support for any exterior claddings and flashings.
- Starter Strip / Vented J Channel:** For Slotted-Zs installed horizontally, if a starter strip is needed, the Slotted-Z can be fabricated into a non-structural vented J-Channel.

For further details on installation and components, please refer to pages 2–5 of this guide.

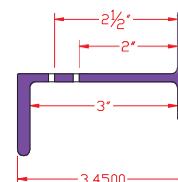
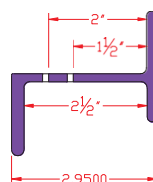
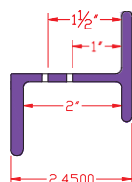
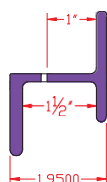
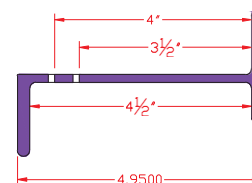
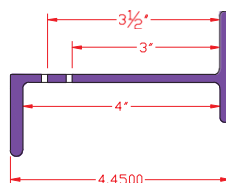
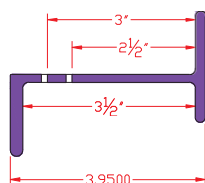
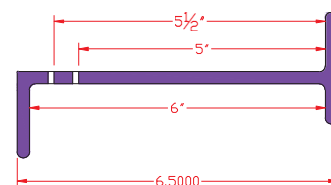
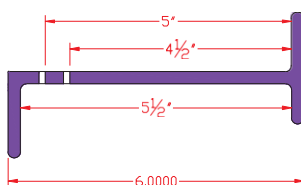
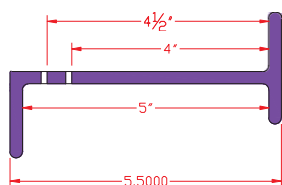
## ROCKETStick Installation:

- If using ROCKETSticks for insulation securement, best practice is to use one ROCKETStick as a driver into the other. [Installation Video Instructions](#)

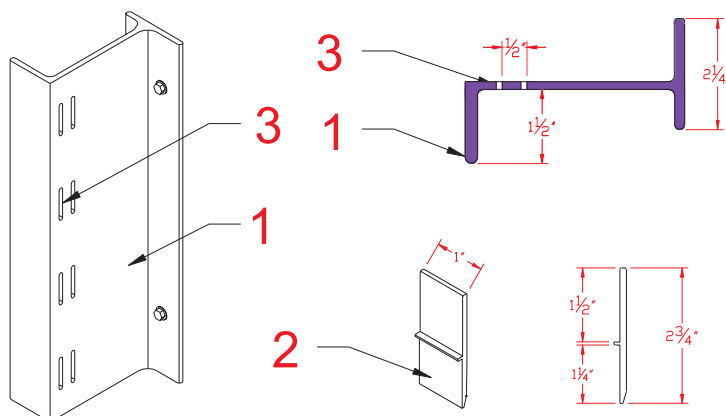
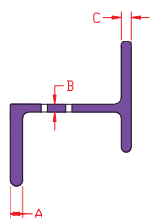


# SLOTTED-Z<sup>®</sup> FG

Fiberglass Girt with Insulation Securement



SLOTTED Z FG				
Insulation Depth	Stem Range Thickness <b>A</b>	Web Thickness <b>B</b>	Wall Range Thickness <b>C</b>	
1.5"	0.25"	0.16"	0.20"	
2"	0.25"	0.16"	0.20"	
2.5"	0.25"	0.16"	0.20"	
3"	0.25"	0.16"	0.20"	
3.5"	0.25"	0.16"	0.20"	
4"	0.25"	0.16"	0.20"	
4.5"	0.25"	0.16"	0.20"	
5"	0.25"	0.25"	0.25"	
5.5"	0.25"	0.25"	0.25"	
6"	0.25"	0.25"	0.25"	



ANY PRODUCT MAY BE APPLIED  
OVER SLOTTED-Z<sup>®</sup> FG SYSTEMS

PATENTS: 17,091,255, D,940,351, D,940,352 . Utility Patents Pending,  
Design Patents Pending, International Patents Pending.

## LEGEND:

Provided By: MANUFACTURER	Provided By: OTHERS
#1 SLOTTED-Z <sup>®</sup> FG	
#2 ROCKETStick <sup>®</sup> (Optional)	
#3 Insulation Securement Slot/Weep - Air/Water Filtration for Rainscreen principle	

## FASTENER TYPES:

SLOTTED-Z<sup>®</sup> To Wall  
#14 (Stud) HWH SDS  
#14 (Concrete)

FASTENER SIZE ADJUSTED BY STRUCTURAL ENGINEER

SLOTTED-Z<sup>®</sup> FG (Fiberglass Girt)  
Component Sizing - SLOTTED-Z<sup>®</sup> FG

SCALE: 3" = 1' - 0"

SYSTEM SHOWN:  
SLOTTED-Z<sup>®</sup> FG - 3.5"

DATE: 05-01-2023

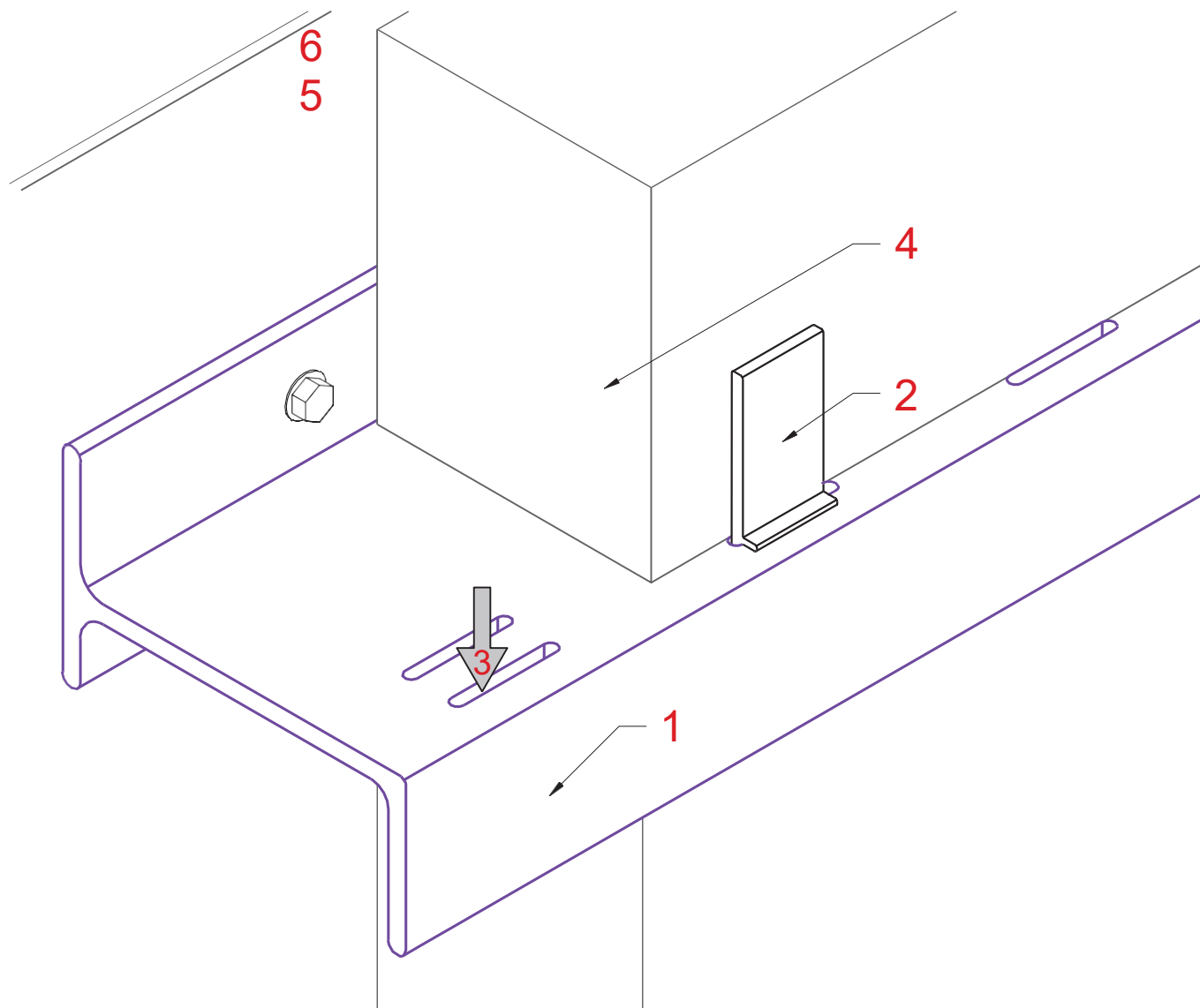


**CLADIATOR<sup>®</sup>**  
Built to Conquer New Challenges

Confidential Document: Property of CLADIATOR. Any transfer of this document without the express written permission of CLADIATOR is unlawful. This document includes: Originals, duplicates, and electronic versions. All are exclusive. Information contained herein or related hereto is intended only for evaluation by technically skilled persons, with any use thereof to be at their independent discretion and risk. Such information is believed to be reliable, but CLADIATOR shall have no responsibility or liability for results obtained or damages resulting from such use. CLADIATOR grants no license under, and shall have no responsibility or liability for infringement of, any patent proprietary right. Sales of CLADIATOR products shall be independent and subject exclusively to warranties set forth in CLADIATOR acknowledgment. The foregoing may be waived or modified only in writing by an CLADIATOR officer.

# SLOTTED-Z<sup>®</sup> FG

Fiberglass Girt with Insulation Securement



ANY PRODUCT MAY BE APPLIED  
OVER SLOTTED-Z<sup>®</sup> FG SYSTEMS

PATENTS: 17,091,255, D,940,351, D,940,352 . Utility Patents Pending,  
Design Patents Pending, International Patents Pending.

## LEGEND:

Provided By: MANUFACTURER	Provided By: OTHERS
#1 SLOTTED-Z <sup>®</sup> FG	#4 Insulation
#2 ROCKETStick <sup>®</sup> (Optional)	#5 Moisture Barrier
#3 Insulation Securement Slot/Weep - Air/Water Filtration for Rainscreen principle	#6 Masonry/Stud Wall

## FASTENER TYPES:

SLOTTED-Z<sup>®</sup> To Wall  
#14 (Stud) HWH SDS  
#14 (Concrete)

FASTENER SIZE ADJUSTED BY STRUCTURAL ENGINEER

SLOTTED-Z<sup>®</sup> FG (Fiberglass Girt)  
Component Sizing - SLOTTED-Z<sup>®</sup> FG

SCALE: 3" = 1' - 0"

SYSTEM SHOWN:  
SLOTTED-Z<sup>®</sup> FG - 3.5"

DATE: 05-01-2023

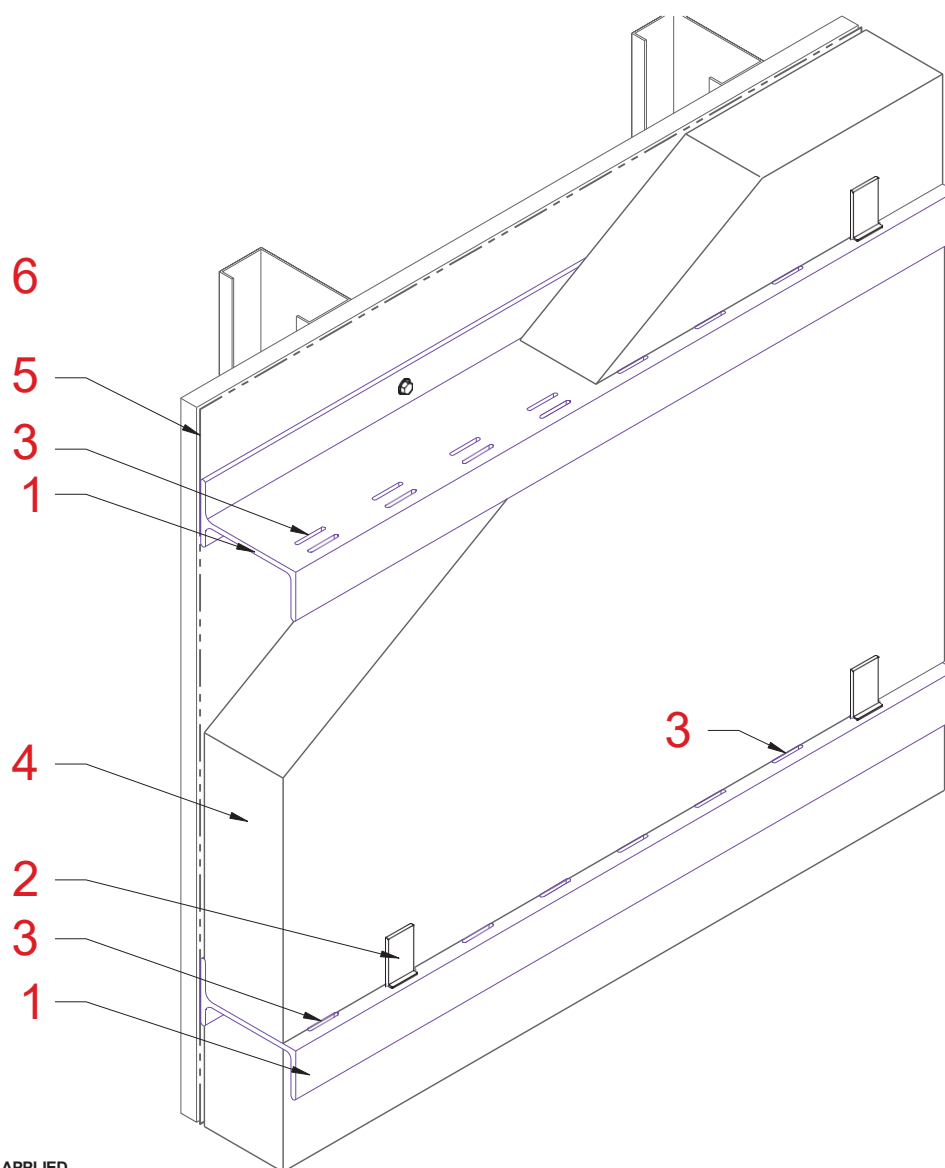


**CLADIATOR<sup>®</sup>**  
Built to Conquer New Challenges

Confidential Document: Property of CLADIATOR. Any transfer of this document without the express written permission of CLADIATOR is unlawful. This document includes: Originals, duplicates, and electronic versions. All are exclusive. Information contained herein or related hereto is intended only for evaluation by technically skilled persons, with any use thereof to be at their independent discretion and risk. Such information is believed to be reliable, but CLADIATOR shall have no responsibility or liability for results obtained or damages resulting from such use. CLADIATOR grants no license under, and shall have no responsibility or liability for infringement of, any patent proprietary right. Sales of CLADIATOR products shall be independent and subject exclusively to warranties set forth in CLADIATOR acknowledgment. The foregoing may be waived or modified only in writing by an CLADIATOR officer.

# SLOTTED-Z<sup>®</sup> FG

Fiberglass Girt with Insulation Securement



ANY PRODUCT MAY BE APPLIED  
OVER SLOTTED-Z<sup>®</sup> FG SYSTEMS

PATENTS: 17,091,255, D,940,351, D,940,352 . Utility Patents Pending,  
Design Patents Pending, International Patents Pending.

## LEGEND:

Provided By: MANUFACTURER	Provided By: OTHERS
#1 SLOTTED-Z <sup>®</sup> FG	#4 Insulation
#2 ROCKETStick <sup>®</sup> (Optional)	#5 Moisture Barrier
#3 Insulation Securement Slot/Weep - Air/Water Filtration for Rainscreen principle	#6 Masonry/Stud Wall

## FASTENER TYPES:

SLOTTED-Z<sup>®</sup> To Wall  
#14 (Stud) HWH SDS  
#14 (Concrete)

FASTENER SIZE ADJUSTED BY STRUCTURAL ENGINEER

SLOTTED-Z<sup>®</sup> FG (Fiberglass Girt)  
Component Sizing - SLOTTED-Z<sup>®</sup> FG  
SCALE: 3" = 1' - 0"

SYSTEM SHOWN:  
SLOTTED-Z<sup>®</sup> FG - 3.5"

DATE: 05-01-2023

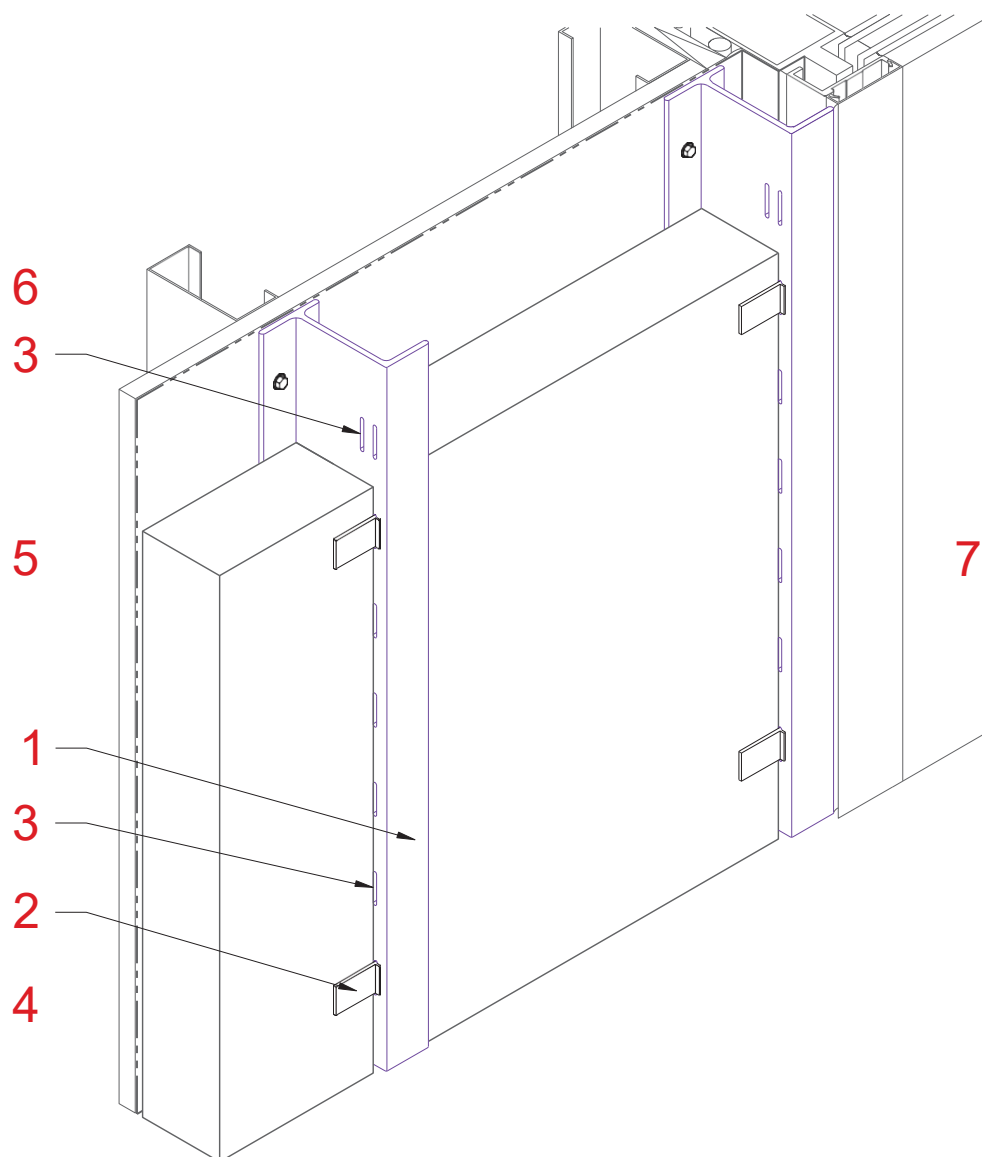


**CLADIATOR<sup>®</sup>**  
Built to Conquer New Challenges

Confidential Document: Property of CLADIATOR. Any transfer of this document without the express written permission of CLADIATOR is unlawful. This document includes: Originals, duplicates, and electronic versions. All are exclusive. Information contained herein or related hereto is intended only for evaluation by technically skilled persons, with any use thereof to be at their independent discretion and risk. Such information is believed to be reliable, but CLADIATOR shall have no responsibility or liability for results obtained or damages resulting from such use. CLADIATOR grants no license under, and shall have no responsibility or liability for infringement of, any patent proprietary right. Sales of CLADIATOR products shall be independent and subject exclusively to warranties set forth in CLADIATOR acknowledgment. The foregoing may be waived or modified only in writing by an CLADIATOR officer.

# SLOTTED-Z<sup>®</sup> FG

Fiberglass Girt with Insulation Securement



ANY PRODUCT MAY BE APPLIED  
OVER SLOTTED-Z<sup>®</sup> FG SYSTEMS

PATENTS: 17,091,255, D,940,351, D,940,352 . Utility Patents Pending,  
Design Patents Pending, International Patents Pending.

## LEGEND:

Provided By: MANUFACTURER	Provided By: OTHERS
#1 SLOTTED-Z <sup>®</sup> FG	#4 Insulation
#2 ROCKETStick <sup>®</sup> (Optional)	#5 Moisture Barrier
#3 Insulation Securement Slot/Weep - Air/Water Filtration for Rainscreen principle	#6 Masonry/Stud Wall
	#7 Door/Window

## FASTENER TYPES:

SLOTTED-Z<sup>®</sup> To Wall  
#14 (Stud) HWH SDS  
#14 (Concrete)

FASTENER SIZE ADJUSTED BY STRUCTURAL ENGINEER

SLOTTED-Z<sup>®</sup> FG (Fiberglass Girt)  
Component Sizing - SLOTTED-Z<sup>®</sup> FG  
SCALE: 3" = 1' - 0"

SYSTEM SHOWN:  
SLOTTED-Z<sup>®</sup> FG - 3.5"

DATE: 05-01-2023



**CLADIATOR<sup>®</sup>**  
Built to Conquer New Challenges

Confidential Document: Property of CLADIATOR. Any transfer of this document without the express written permission of CLADIATOR is unlawful. This document includes: Originals, duplicates, and electronic versions. All are exclusive. Information contained herein or related hereto is intended only for evaluation by technically skilled persons, with any use thereof to be at their independent discretion and risk. Such information is believed to be reliable, but CLADIATOR shall have no responsibility or liability for results obtained or damages resulting from such use. CLADIATOR grants no license under, and shall have no responsibility or liability for infringement of, any patent proprietary right. Sales of CLADIATOR products shall be independent and subject exclusively to warranties set forth in CLADIATOR acknowledgment. The foregoing may be waived or modified only in writing by an CLADIATOR officer.